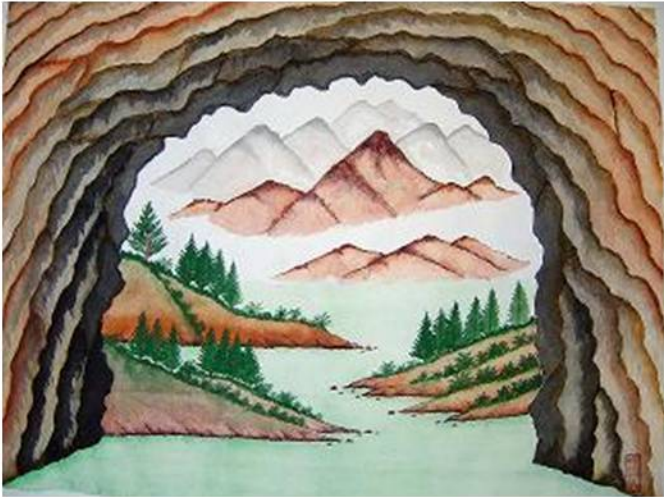


The Art Work of Enso San Yong



Another Life Dimension Exists



Mist and Peak Intertwine

The landscape paintings of Enso San Yong are not based on that which is physically apparent to a painter's eye at the moment, but more frequently, the recalled scenery of his decades of travel through China and later America. His landscape images were not only brushed on paper, but also hidden in a durable medium, which he invented through years of long painstaking scientific research.

銀鬚辛翁的山水畫不論繪於紙上或藏於石中，都並不模擬於眼前的實物，而往往是集大成於過去數十年遊歷中美的印刻於心中的瑰麗景色。他的畫不單繪於紙上，並隱藏於石中——一種辛翁經歷多年研究而制作成功的藝術媒介物。

Suns Gallery cordially invites you to view
the art work of Enso San Yong – a crystalline union of science and art

Opening Reception

Friday, July 7, 2006: 4:00 pm to 8:00 pm

Continuing

Saturday, July 8 2006: 11:00 am to 7:00 pm

Sunday, July 9 2006: 11:00 am to 5:00 pm

Address

Chinatown Community Cultural Center
616 H Street, N.W. Suite 201
Washington D.C., 20001
Half a block from Gallery Place/Chinatown Metro Station

<http://www.sunsgallery.com>